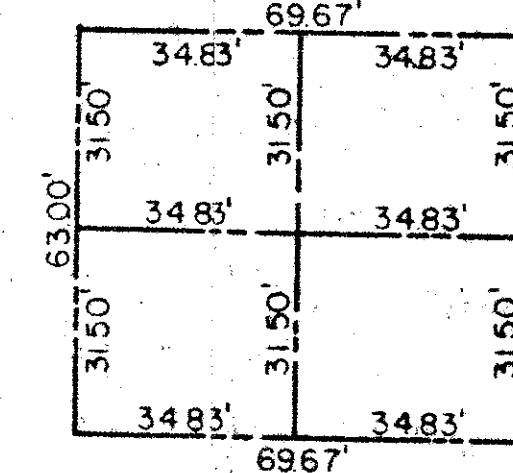
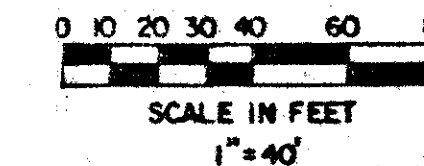


COURTYARDS AT BOCA I

PART OF BOCA DEL MAR, A P.U.D.
SITUATE IN SECTION 21, TOWNSHIP 47 SOUTH, RANGE 42 EAST,
PALM BEACH COUNTY, FLORIDA, BEING A REPLAT OF A
PORTION OF TRACT 7 OF BOCA DEL MAR NO. 5, (P.B.30,P.127-128).

MARCH ,1984 SHEET 2 OF 2

STATE OF FLORIDA
COUNTY OF PALM BEACH
THIS PLAT WAS FILED FOR
RECORD AT
THIS DAY OF
AD. 1984 AND DULY RECORDED
IN PLAT BOOK ON PAGE
AND
JOHN B. DUNKLE, CLERK
CIRCUIT COURT
BY: D.C.



TYPICAL BLOCK
SCALE 1" = 30'

CASTEL GARDENS (PB. 37, PGS. 39-40)

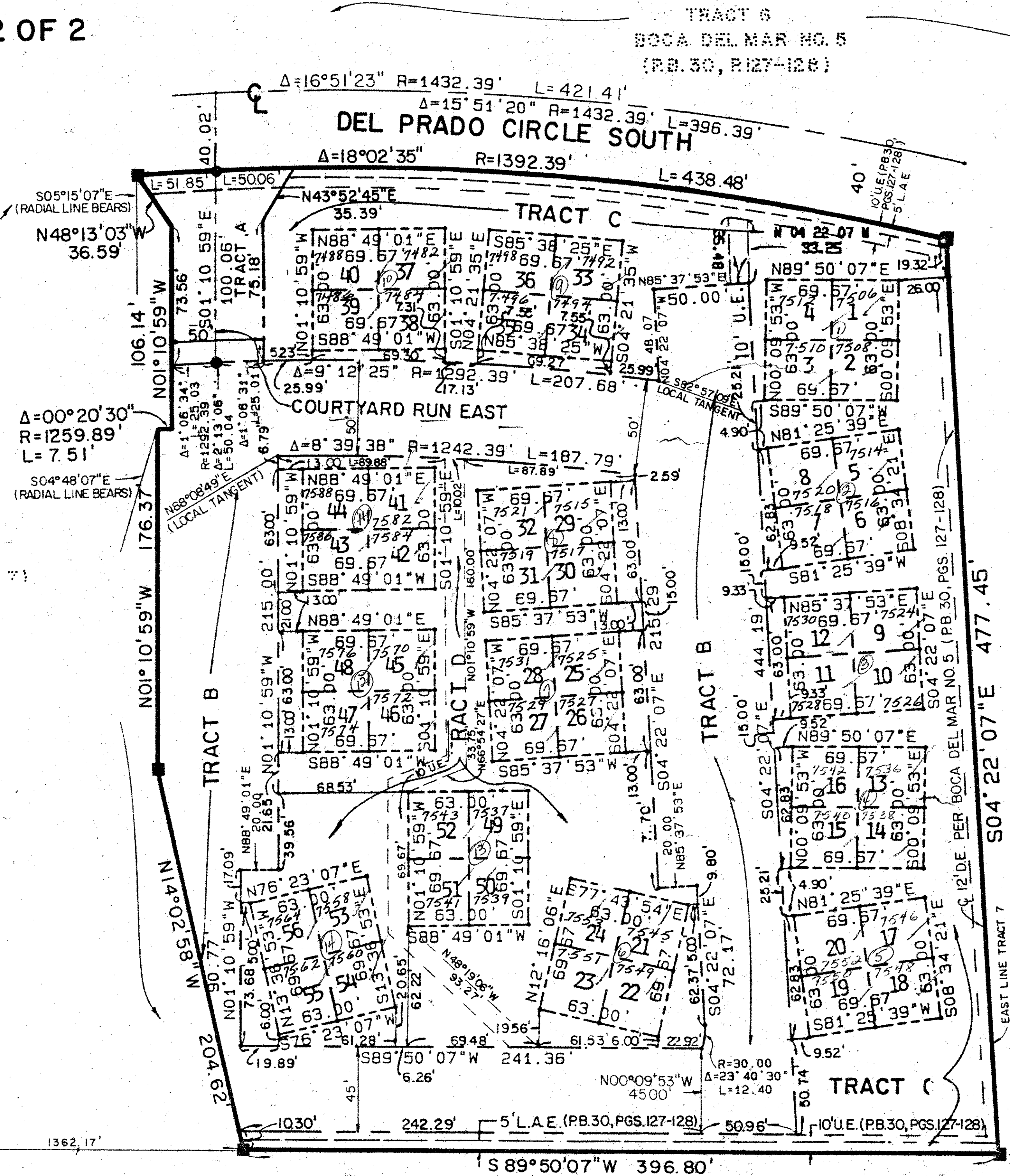
*All addresses
are per courtyard*

P. U. D. TABULAR DATA

SITE AREA	4.82 AC.
UNITS	56
GROSS DENSITY	11.62 D.U./AC.
% RESIDENTIAL USE	100.00
BUILDING AREA	1.25 AC.
WATER BODIES	0.00 AC.
STREETS & UNCOVERED PARKING	1.13 AC.
RECREATION AREA	0.00 AC.
OPEN SPACE (INCL LAKES)	2.42 AC.
PARKING REQUIRED	112
PARKING PROVIDED	121

0205-301

47/131



21/47/42

SUBDIVISION	Courtyards at Boca I	
BOOK	47	PAGE 131
FLOOD ZONE	B	FLOOD MAP # 2000
QUAD	54	ZONING AR
SE	PUD	ZIP CODE 33403
PUD NAME	Boca Del Mar	

Meridian		WEST PALM BEACH, FLORIDA	
Surveying and mapping inc.			
DRAWN	MEH	DATE	DEC 1983
CHECKED		SCALE	
DRAWING NO.	34-0058	COURTYARDS AT BOCA I	

SW CORNER SEC 21 842.79' S89°50'07"W SOUTH LINE SEC. 21/47/42

Palmetto Park Road (200' R/W) N89°50'07"W L.W.D.D. LATERAL NO 43

BOCA DEL MAR NO. 4 (PB. 30, PGS. 96)